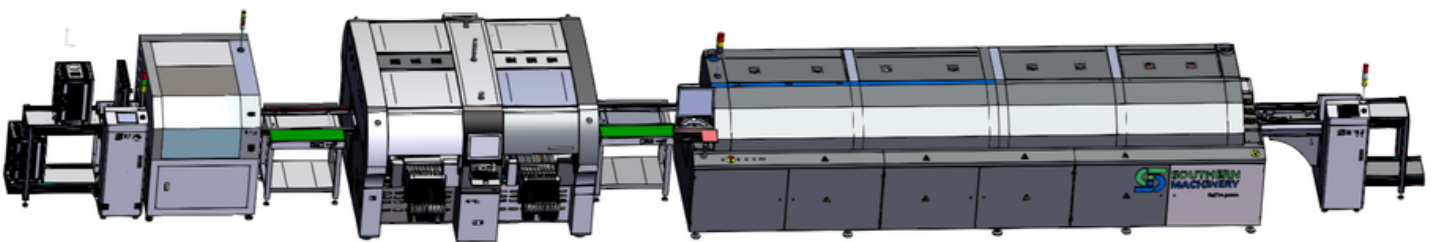


# Specialized in Design and Manufacturing SMT Nozzle



Southern Machinery

**Call:** +86 1 3602562576

**Email:** [info@SMThelp.com](mailto:info@SMThelp.com)

**ASM Nozzle:**

<https://ph.smthelp.com/album/asm-siemens-siplace-mounter-nozzle.4Jg>

**JUKI Nozzle:**

<https://ph.smthelp.com/album/juki-nozzle-pick-and-place-machine.W1A>

**FUJI Nozzle:**

<https://ph.smthelp.com/album/fuji-nxt-nozzle-feeder-spare-parts.GrV>

**Panasonic Nozzle:**

<https://ph.smthelp.com/album/panasonic-npm-machine-nozzle-smt-parts.72o>

**Yamaha Nozzle:**

<https://ph.smthelp.com/album/yamaha-nozzle-ceramic.oYB>

**Customized Nozzle:**

<https://ph.smthelp.com/album/smt-nozzle-supplier.ObO>

# PANASONIC



## AM100

PART No.	NAME	SPECIFICATION	MATERIAL	REMARK
	256M	0.39×0.3	CERAMIC	0402
	225M	0.6×0.35	CERAMIC	0603
	226M	0.6×0.5	CERAMIC	0603,1005
	230M	1.0×0.6	CERAMIC	1005,1608
	235M	1.6×0.8	CERAMIC	1608~3216
	387M	1.6×1.1	CERAMIC	3216,4532
	120MT	Φ1.3/Φ0.9	METAL	2012,3216
	240MT	Φ2.4/Φ1.8	METAL	3216,4532
	260M	Φ5.0/Φ3.0	METAL	TAN
	184MTR	Φ6.0/Φ4.0	METAL	SOP,QFP
	140M	Φ4.0	RUBBER	IC
	185M	Φ6.0	RUBBER	QFP,PLCC
	388M	Φ7.0	RUBBER	QFP,PLCC
	389M	Φ8.0	RUBBER	QFP,PLCC
	199MR	Φ10.0	RUBBER	Large Component

## DT401, NPM-2/3HEAD

PART No.	NAME	SPECIFICATION	MATERIAL	REMARK
	1582N	0.65×0.35	CERAMIC	0603
N610098969A	1001N	1.3×0.9	METAL/PLASTIC	1005
A	1001C	1.3×0.9	CERAMIC	1005
N610098969C	N	3.0×2.2	METAL/PLASTIC	3216
A	1002N	3.0×2.2	CERAMIC	3216
N610098970A	1002C	4.0×3.0	METAL	SOP,QFP
A	N	Φ8.0	RUBBER	SOP,QFP
N610098970C	1003N	Φ10.0	RUBBER	Large Component
A	1004N	CALIBRATION		
N610098971A	1005N			
A	1006N			
N610098972A				
A				
N610098973A				
A				
N610114702A				
A				



## CM602(12H), NPM-16HEAD

PART No.	NAME	SPECIFICATION	MATERIAL	REMARK
	204CSN	0.35×0.35	CERAMIC	
N610017370A	205CS	0.65×0.35	CERAMIC	0603
C	206CS	0.5×0.6	CERAMIC	0603~1005
N610030510A	256CSN(203ZSN)	0.45×0.3	CERAMIC	0402
C	210CS	1.1×0.6	CERAMIC	1005
N610038265A	218CS(209CS)	0.6×0.5	CERAMIC	1005
<del>N610040480A</del>	225CSN	0.6×0.35 (X)	CERAMIC	0603
<del>K0210</del>	226CSN	0.5×0.6 (X)	CERAMIC	0603~1005
N610119480A	230CSN	1.0×0.7 (X)	CERAMIC	1005~1608
B	235CSN	1.6×0.8 (E)	CERAMIC	1608~3216
N610119484A	240CSN	Φ2.4/Φ1.8	CERAMIC	3216~4512
B	110CSN	Φ0.6/Φ0.4	CERAMIC	1005
N610119485A	110SN	Φ0.6/Φ0.4	METAL	1005
B	115CSN	Φ0.9/Φ0.65	CERAMIC	1608
N610119486A	115SN	Φ0.9/Φ0.65	METAL	1608
B	120CSN	Φ1.3/Φ0.9	CERAMIC	2125
N610119444C	120SN	Φ1.3/Φ0.9	METAL	2125
B	130SN	Φ2.4/Φ1.8	METAL	3216
N610119444A	140SN	Φ4.0	RUBBER	IC
B	161SN	Φ1.3/Φ0.9	METAL	
N610119450C	162SN	MELF Φ1.8/	METAL	
B		Φ1.2 MELF		

N610119450A

B

N610119456C

A

N610119456A

## CM402(8H), NPM-8HEAD

PART No.NAME SPECIFICATION			MATERIAL	REMARK
	204CN	0.35×0.35	CERAMIC	
N61000995A	205A	0.65×0.35	CERAMIC	0603
A	206A	0.5×0.6	CERAMIC	0603-1005
N610015533A	256CN(203ZN)	0.45×0.3	CERAMIC	0402
A	210A	1.1×0.6	CERAMIC	1005
N610029201A	218(209)	0.6×0.5	CERAMIC	1005
N610040982A	225CN	0.6×0.35 (X)	CERAMIC	0603
K0210	226CN	0.5×0.6 (X)	CERAMIC	0603-1005
N610119490A	230CN	1.0×0.7 (X)	CERAMIC	1005-1608
B	235CN	1.6×0.8 (E)	CERAMIC	1608-3216
N610119493A	240CN	Φ2.4/Φ1.8	CERAMIC	3216-4512
B	110CN	Φ0.6/Φ0.4	CERAMIC	1005
N610119496A	110N	Φ0.6/Φ0.4	METAL	1005
B	115CN	Φ0.9/Φ0.65	CERAMIC	1608
N610119499A	115N	Φ0.9/Φ0.65	METAL	1608
B	120CN	Φ1.3/Φ0.9	CERAMIC	2125
N610099372C	120N	Φ1.3/Φ0.9	METAL	2125
A	130N	Φ2.4/Φ1.8	METAL	3216
N610099372A	140N	Φ4.0	RUBBER	IC
A	161N	Φ1.3/Φ0.9 MELF	METAL	
N610099373C	162N	Φ1.8/Φ1.2 MELF	METAL	
A	450	Φ6.0	RUBBER	SOP,QFP
N610099373A	460	Φ10.0	RUBBER	Large Component



A  
N610099374C  
A  
N610099374A  
A  
N610099375A  
A  
N610099376A  
A  
N610126847A  
A



## BM-series, MSF

PART No.NAME		SPECIFICATION	MATERIAL	REMARK
10862GH810A	SX	0.4×0.6	CERAMIC	0603
A	SA	0.8×1.0	CERAMIC	1005
10807GH811A	S	1.2×1.8	CERAMIC	1608-2125
G	M	3.4×4.0/Φ2.5	METAL	IC
10807GH812A	ML	Φ6.0	Rubber	SOP,QFP
G	LA	Φ10.0	Rubber	SOP,QFP
10807GH813A	CN-S	1.5/7.0		CONNECTOR
F	CN-M	2.1/16.0		CONNECTOR
10807GH814A	CN-R1	5×12	METAL	
F	CN-R2	1.8×20	METAL	
10807GH815A	CN-R3	4×25	METAL	
F	CN-R4	5×9.4	METAL	
10807GH817A	CN-R5	0.8×9.6	METAL	
F	CN-R6	5×16	METAL	
10807GH821A	CN-R7	2.95×6.5	METAL	
10870GH818A	CN-R8	1.2×2.8	METAL	
F	CN-R9	1.2×2.8	METAL	
10807GH823AF	CN-R10	2.4×13.4/2-HOLE	METAL	
F	CN-R11	2.1×14/SIDE-HOLE	METAL	
10807GH824AF	MELF	Φ1.3	METAL	
10807GHJ813A	CN-R12	5×15	METAL	MELF

L  
10807GH825AF

## MSR, HT-series

PART No.NAME		SPECIFICATION	MATERIAL	REMARK
10468S000	VVS(NEW)	0.5×0.65	CERAMIC	OCTAGON
2	VVS(OLD)	0.5×0.6	CERAMIC	RECTANGLE
10468S000	VS	0.6×1.0	CERAMIC	1005
2	S	1.0×1.6	CERAMIC	1608-2125
10468S000	M	Φ1.65/Φ1.2	CERAMIC	3216
3	L	Φ3.0/Φ2.5	METAL	4532,IC/M
10468S000	LL	Φ5.5/Φ4.5	METAL	IC/M
4	LLL	Φ8.0	METAL	IC/L

104671013

4

10467S000

1

10467S000

2



# PANASONIC



## MV-series

PART NO.	NAME	SPECIFICATION	MATERIAL	REMARK
1042 7732	SX	0.45×0.6	CERAMIC	
71XX 1042	SA (X)	0.8×1.0	CERAMIC	
8751 51XX	RSS (SS)	1.0×1.4	CERAMIC	
1020 1750	MA	1.2×1.8	METAL	
15XX 1022	M	Φ1.2/Φ0.8	METAL	
4784 86XX	M	Φ1.6/Φ1.2	METAL	
1020 1530	L	Φ3.0/Φ2.5	METAL	
00XX 1020	LL	Φ5.5/Φ4.5	METAL	
1795 61XX	LLL	Φ8.0	METAL	
<del>1020 1795</del>				
00XX 1020				
1750 11XX				
1022 4790				
22XX				

## HDP DISPENSER

PART NO.	NAME	SPECIFICATION	MATERIAL	REMARK
102157040	VS	1D/1S Φ0.7/Φ0.4	METAL	160
0	S	2D/1S Φ0.8/Φ0.5	METAL	8
102157056	L	P=1.2 2D/1S Φ1.0/	METAL	212
2	L	Φ0.7 P=3.0 2D/1S	METAL	5
102157054	S	Φ1.3/Φ1.0 P=3.0	METAL	321
2	S	2D/2S Φ0.7/Φ0.4	METAL	6
102157055	S	P=0.8 2D/2S Φ0.7/	METAL	321
2	L	Φ0.4 P=1.0 2D/2S	METAL	6
<del>102157041</del>	L	Φ0.8/Φ0.5 P=1.3	METAL	160
<del>102157042</del>	L	2D/2S Φ1.0/Φ0.7	METAL	8
<del>102157041</del>	NOZZLE HOUSING	P=1.2 2D/2S Φ1.1/	METAL	212
2		Φ0.8 P=2.0 4D/1S		5
102157057		Φ0.9/Φ0.6 P=3.0		212
2				5
				321
				6
				IC/S
				IC/L



## HDF DISPENSER

PART NO.	NAME	SPECIFICATION	MATERIAL	REMARK
10430 59	VS	1D/1S Φ0.6/Φ0.3	METAL	160
700 10483	VS	2D/2S Φ0.6/Φ0.3	METAL	8
70 240	S	P=0.7 2D/2S Φ0.7/	METAL	160
10430 59	S	Φ0.4 P=1.0 2D/2S	METAL	8
710 10483	VS	Φ0.8/Φ0.5 P=1.0	METAL	212
70 420	L	2D/2S Φ0.7/Φ0.4	METAL	5
10483 70	L	P=0.8 2D/2S Φ1.1/	METAL	212
220 10430		Φ0.8 P=2.0 4D/1S		5
59 721		Φ0.9/Φ0.6 P=3.0		160
10430 59				8
720				IC/S
				IC/L

**MPAG3,  
MPAV2B MSH3  
MSH2, MSH-G1  
MMC-series  
MCF-series**



### BD10S, BD12S-M DISPENSER

PART NO/NAME/SPECIFICATION				MATERIAL	REMARK
1020C	S	2D/2S	Φ0.7/Φ0.4	METAL	160
0	S	P=0.8 2D/2S	Φ0.8/	METAL	8
1016C	M	Φ0.5 P=0.9 2D/2S		METAL	212
1	IC/S	Φ1.0/Φ0.7	P=2.0	METAL	5
1017C	IC/L	2D/2S	Φ1.3/Φ1.0	METAL	321
1		P=2.0 4D/2S	Φ1.3/		6
		Φ1.0 P=1.5			IC/S
					IC/L

### BD20S, BD30S-M DISPENSER

PART NO/NAME/SPECIFICATION				MATERIAL	REMARK
10HGC0M000	10HGC0	1D/1S	Φ0.7/Φ0.4	METAL	160
0	10HJC0	2D/2S	Φ0.7/Φ0.4	METAL	8
10HJCOM000	10HKC0	P=0.8 2D/2S	Φ0.8/	METAL	160
0	10HLC0	Φ0.5 P=1.0 2D/2S		METAL	8
10HKCOM000	10HFC0	Φ1.0/Φ0.7	P=1.2	METAL	212
0		2D/2S	Φ1.2/Φ0.9		5
10HLCOM000		P=1.5			321
0					6
10HFCOM000					IC/S
0					





### CM88

PART No.	NAME	SPECIFICATION	MATERIAL	REMARK
	0603	Φ0.65/Φ0.35	CERAMIC	0603
231C1111116	1005	Φ0.65/Φ0.45	METAL	1005
(W13VA)	1608	Φ0.9/Φ0.6	METAL	1608
1231C111165	2125	Φ1.3/Φ0.9	METAL	2012~2125
(W13YA)	2125 MELF	Φ1.3/Φ0.9	METAL	
1231C111125 1231C111145 (W13WA)	3216	Φ1.8/Φ1.4	METAL	3216
(W13XA)	3216 MELF	Φ1.8/Φ1.4	METAL	
1231C111153 (W13ZA)	IC/S	Φ3.0/Φ2.2	METAL	IC/
	IC/L	Φ4.0/Φ1.5	METAL	S
				IC/
				L

**CM82C-ME series  
CM82C-MG series  
CM85C-MGU series  
CM86C-M2 series**



## YSM40

PART NO.	NAME	SPECIFICATION	MATERIAL	REMARK
KLF-M87A0-	510A	0.25×0.35(○)	CERAMIC	040
A0 KLF-	511A	0.35×0.75(□)	CERAMIC	2
M8710-A0	512A	1.2×0.45(□)	CERAMIC	060
KLF-M8720-	513A	1.3×2.0(Ξ)	CERAMIC	3
A0 KLF-	501A	0.8×0.7(X)	CERAMIC	100
M8730-A1	502A	1.0×1.7(X)	CERAMIC	5
KLF-M7710-	503A/514A	Φ4.0/3.0×2.0	METAL	201
A0 KLF-	504A/515A	Φ8.0	O-ring	2
M7720-A0				100
KLF-M8740-				5
A0 KLF-				160
M8750-A0				8



## YS12, YS12F, YS12P, YS24, MG-3

PART NO.	NAME	SPECIFICATION	MATERIAL	REMARK
KHY-M77A0-	310A	0.25×0.35 (○)	CERAMIC	0402
A0X KHY-	311A	0.35×0.75 (□)	CERAMIC	0603
M7710-A0X	312A	1.2×0.45 (□)	CERAMIC	1005
KHY-M7720-	313A	1.3×2.0 (Ξ)	CERAMIC	2012
A0X KHY-	301A	0.8×0.7 (X)	CERAMIC	1005
M7730-A0X	302A	1.0×1.7 (X)	CERAMIC	1608
KHN-M7710-	303A/314A	Φ4.0/3.0×2.0	METAL	IC
A1X KHN-	304A/315A	Φ8.0	O-ring	SOP,QFP
M7720-A1X	305A/316A	Φ15.0	O-ring	SOP,QFP
KHY-M7740-	306A/317A	3.0×2.0	METAL	MELF
A0X KHY-	309A	Φ1.2/Φ0.7	CERAMIC	1608
M7750-A0X				
KHY-M7760-				
A0X KHY-				
M7770-A0X				

## YV100X, YV100X-F

PART NO.	NAME	SPECIFICATION	MATERIAL	REMARK
	060	0.35×0.65	CERAMIC	0603
KV8-M7710-	3	0.7×0.8 (X)	CERAMIC	1005
A0X KV8-	71A	1.0×1.7 (X)	CERAMIC	1608
M7720-A0X	72A	Φ4.0/3.0×2.0	METAL O-	IC
KV8-M7730-	73A	Φ8.0	ring METAL	SOP, QFP
A1X KV8-	74A	3.0×2.0	CERAMIC	MELF
M7740-A1X	76A	Φ1.2/Φ0.7	CERAMIC	1608
KV8-M7760-	79A	0.6×0.8 (X)	CERAMIC	1005
A1X KV8-	71F	1.0×1.7 (X)	METAL	1608
M77WL-A00	72F	Φ4.0/3.0×2.0	CERAMIC	IC
KV8-M71U1-	73F	Φ1.2/Φ0.7		1608
002 KV8-	79F			
M71N2-A00				
KV8-M71N3-				
A00 KV8-M7WL-				
A00				



**YAMAHA**

**YG100R, MG-1/8**



PART NO.		NAME	SPECIFICATION	MATERIAL	REMARK
			0603	CERAMIC	0603
KGS-M7710-		211A	0.7×0.8 (X)	CERAMIC	1005
A1X	KGS-	212A	1.0×1.7 (X)	CERAMIC	1608
M7720-A1X		213A	Φ4.0/3.0×2.0	METAL	IC
KGS-M7730-		214A	3.0×2.0	O-ring	IC
01X	KGS-	215A	Φ1.2/Φ0.7	O-ring	IC
M7740-A1X		216A	0.7×0.8	METAL	MELF
KGS-M7750-		219	1.0×1.7	CERAMIC	1608
A1X	KGS-	211F(71F)	0.7×0.8 (X)	CERAMIC	1005
M7760-01X		212F(72F)	1.0×1.7 (X)	CERAMIC	1608
KGS-M7790-		213F(73F)	Φ4.0/3.0×2.0	METAL	IC
A1X		219F(79F)	Φ1.2/Φ0.7	CERAMIC	1608

**YG200, YG300**

PART NO.		NAME	SPECIFICATION	MATERIAL	REMARK
			0603	CERAMIC	0603
KGT-M7710-		201	0.7×0.8 (X)	CERAMIC	1005
A0	KGT-	202	1.0×1.7 (X)	CERAMIC	1608
M7720-A0		203	Φ4.0/3.0×2.0	METAL	IC
KGT-M7730-		206	3.0×2.0	CERAMIC	MELF
A0	KGT-	209	Φ1.2/Φ0.7	CERAMIC	1608
M7760-A0		201F(71F)	0.7×0.8 (X)	CERAMIC	1005
KGT-M7790-		202F(72F)	1.0×1.7 (X)	CERAMIC	1608
A0	KV8-	203F(73F)	Φ4.0/3.0×2.0	METAL	IC
M71N1-A0		209F(79F)	Φ1.2/Φ0.7	CERAMIC	1608



~~KV8-M71N2~~  
A0 KV8-  
M71N2-A0  
KV8-M71N9-  
A0

**YV88XG, YV88XG-F(EMERALD-XII)**



PART NO.		NAME	SPECIFICATION	MATERIAL	REMARK
KV7-M7710-		61A	0.7×0.8 (X)	CERAMIC	1005
A1X	KV7-	62A	1.0×1.7 (X)	CERAMIC	1608
M7720-A1X		63A	Φ4.0/3.0×2.0	METAL	IC/S
KV7-M7730-00X		64A	0 Φ10.0	O-ring	IC
KV7-M7740-A0X		65A	Φ15.0	O-ring	IC
KV7-M7750-A0X		66A	3.0×2.0	O-ring	MELF
KV7-M7760-00X		61F	0.7×0.8 (X)	CERAMIC	1005
KV7-M71N1-A0X		62F	1.0×1.7 (X)	CERAMIC	1608
KV7-M71N2-A0X		63F	Φ4.0/3.0×2.0		IC
KV7-M71N3-A1X		69F	0		1608
KV7-M71N4-A0X			Φ1.2×Φ0.7	CERAMIC	



## YVL88, YV100II(TOPAZ, EMERALD)

PART NO.		NAME	SPECIFICATION	MATERIAL	REMARK
KM0-M711A-	31A		1.0×1.2 (X)	CERAMIC	1005
31X KM0-	32A		1.0×1.7 (X)	CERAMIC	1608~2012
M711C-02X	32-		Φ4.0/3.0	REFLECTOR	IC
KM0-M711B-	1		Φ4.0/3.0	METAL	IC
00X KM0-	32-		Φ10.0	O-ring	SOP, QFP
M711C-02X	2		Φ15.0	O-ring	SOP, QFP
KM0-M711D-	33		3.0×2.0	METAL	MELF
00X KM0-	34		Φ1.2/Φ0.7	CERAMIC	1608
M711E-00X	35				
KG7-M71AB-	39				
A0X KM0-					
M711J-A0X					



## YM12D, YV64D, YV86D, YV100D

PART NO.		NAME	SPECIFICATION	MATERIAL	REMARK
KG3-M7113-	1608		2D/2S Φ0.7/Φ0.4	METAL	1608
40X KM4-	2125		P=0.8 2D/2S Φ0.8/	METAL	2125
M7113-10X	3216		Φ0.5 P=1.0 2D/2S	METAL	3216
K37-M7113-	IC		Φ0.9/Φ0.6 P=1.0	METAL	IC
40X K37-			2D/2S Φ1.3/Φ1.0		
M7113-00X			P=2.0		

## HSD DISPENSER

PART NO.		NAME	SPECIFICATION	MATERIAL	REMARK
KV6-M7113-	111		2D/2S Φ0.7/Φ0.4 P=0.8	METAL	1608
12X KV6-	112		2D/2S Φ0.8/Φ0.5 P=1.3	METAL	2125
M7113-23X	113		2D/2S Φ1.2/Φ0.9 P=1.7	METAL	L
KV6-M7113-	114		1D/1S Φ0.7/Φ0.4	METAL	
32X KV6-	115		1D/1S Φ1.1/Φ0.8	METAL	
M7113-42X	116		1D/1S Φ1.8/Φ1.5	METAL	
KV6-M7113-	11A		2D/2S Φ0.7/Φ0.4 P=0.8	METAL	1608
52X KV6-	11B		1D/1S Φ1.3/Φ1.0	METAL	
M7113-62X	11C		1D/1S Φ1.6/Φ1.3	METAL	
KV6-M711A-	LBA		2D/1S 2-Φ0.4 P=0.9	METAL	1608
00X KV6-	LCA		2D/1S 2-Φ0.4 P=1.2	METAL	A.P
M711B-00X					2012
KV6-M711C-					A.P
00X KV6-					
M711B-A0X					
KV6-M711C-					



# YAMAHA I-PULSE



## M1, M4

PART No.	NAME	SPECIFICATION	MATERIAL	REMARK
LG0-M771G-	M031	0.46×0.4	CERAMIC	060
00 LG0-	M032	0.9×0.6	CERAMIC	3
M77KG-00	M033	0.9×0.7	CERAMIC	100
LG0-M7701-	M001	0.46×0.4	CERAMIC	Φ603
000 LG0-	M002	0.9×0.6	CERAMIC	1005
M7703-000	M003	Φ1.3/Φ0.7	CERAMIC	1608-2012
LG0-M7705-	M004	Φ1.8/Φ1.2	CERAMIC	2012-3216
000 LG0-	M005	Φ3.0/Φ2.0	METAL	IC
M7707-000	M006	Φ4.5/Φ3.5	METAL	IC
LG0-M7709-	M012	Φ2.0/Φ1.0	METAL	MELF
000 LG0-	M013	Φ2.5/Φ1.2	METAL	MELF
M770B-000	M017	Φ4.0	RUBBER	IC
LG0-M770D-	M018	Φ6.0	RUBBER	SOP,QFP
000 LG0-	M019	Φ8.0	RUBBER	SOP,QFP
M770F-000	M020	Φ10.0	RUBBER	SOP,QFP
LG0-M770H-	M021	0.9×0.7	CERAMIC	1005
000 LG0-	M022	0.9×1.0	CERAMIC	

## M2

PART No.	NAME	SPECIFICATION	MATERIAL	REMARK
LC1-M7712-00	N031	0.46×0.4	CERAMIC	060
LC1-M7714-00	N032	0.9×0.6	CERAMIC	3
LC6-M7716-00	N033	0.9×0.7	CERAMIC	100
LC1-M7701-00	N001	0.46×0.4	CERAMIC	Φ603
LC1-M7703-00	N002	0.9×0.6	CERAMIC	1005
LC1-M7705-00	N003	Φ1.3/Φ0.7	CERAMIC	1608-2012
LC1-M7707-00	N004	Φ1.8/Φ1.2	CERAMIC	2012-3216
LC1-M7709-00	N005	Φ3.0/Φ2.0	METAL	IC
LC1-M770B-	N006	Φ4.5/Φ3.5	METAL	IC
00 LC1-	N012	Φ2.0/Φ1.0	METAL	MELF
M770D-00	N013	Φ2.5/Φ1.2	METAL	MELF
LC1-M770F-00	N017	Φ4.0	RUBBER	IC
LC1-M770H-	N018	Φ6.0	RUBBER	SOP, QFP
00 LC1-	N019	Φ8.0	RUBBER	SOP, QFP
M770K-00	N020	Φ10.0	RUBBER	SOP, QFP
LC1-M770M-	N021	0.9×0.7	CERAMIC	1005
00 LC1-	N022	0.9×1.0	CERAMIC	

M770P-00

LC1-M770S-00

LC1-M770U-

00



## M6, M7, M10, M20

PART No.	NAME	SPECIFICATION	MATERIAL	REMARK
LC6-M7712-10	P031	0.46×0.4	CERAMIC	0603
LC6-M7714-00	P032	0.9×0.6	CERAMIC	1005
LC7-M7716-01	P033	Φ1.3/Φ0.7	CERAMIC	1608
LC6-M7718-00	P034	Φ1.8/Φ1.2	CERAMIC	2012-321
LC6-M7724-00	P042	0.9×0.7	CERAMIC	6 1005
LC6-M7709-	P005	Φ3.0/Φ2.0	METAL	IC
001 LC6-	P006	Φ4.5/Φ3.5	METAL	IC
M770B-001	P012	Φ2.0/Φ1.0	METAL	MELF
LC6-M770D-	P013	Φ2.5/Φ1.2	METAL	MELF
001 LC6-	P017	Φ4.0	RUBBER	IC
M770F-001	P018	Φ6.0	RUBBER	SOP, QFP
LC6-M770H-	P019	Φ8.0	RUBBER	SOP, QFP
003 LC6-	P020	Φ10.0	RUBBER	SOP, QFP
M770K-002	P050	Φ4.0	RUBBER	SOP, QFP
LC6-M770M-	P051	Φ6.0	RUBBER	SOP, QFP
002 LC6-	P052	Φ8.0	RUBBER	SOP, QFP
M770P-002	P053	Φ10.0	RUBBER	
LC6-M7727-	P054	Φ1.8/Φ1.2	PAD	
000 LC6-	P055	Φ3.0/Φ2.0	PAD	
M7729-000	P056	Φ4.5/Φ3.5	PAD	
LC6-M7728-	P057	Φ6.0/Φ5.0	PAD	
000 LC6-	P061	0.7×0.7	CERAMIC	
M772D-000	P062	1.7×0.9	CERAMIC	
LC6-M7735-	P072	Φ2.0/Φ1.0	METAL	MELF
000 LC6-	P073	Φ2.5/Φ1.2	METAL	MELF

M772K-000

LC6-M772V-

000 LC6-

M7731-000

LC6-M772F-

000 LC6-

## Σ-G4, Σ-G5 (High speed)

PART No.		NAME	SPECIFICATION	MATERIAL	REMARK
HG21C--	HG21C/HG22C		0.5×0.3	CERAMIC	0402
-	HG31C/HG32C/HG33C		0.7×0.4	CERAMIC	0603
HG32C--	HV31C/HV32C		0.7×0.4	CERAMIC	0603
- HV32C-	HG51C/HG52C/HG53C		1.1×0.6	CERAMIC	1005
--	HV51C/HV52C		1.1×0.6	CERAMIC	1005
HG52C--	HG81C/HG82C/HG83C		1.7×0.9	CERAMIC	1608
- HV51C-	HV81C/HV82C		1.7×0.9	CERAMIC	1608
--	HV13C/HV03C		Φ1.3/Φ0.9	CERAMIC	2012
HG82C--	HV14C/HA04C		Φ1.8/Φ1.1	CERAMIC	3216
- HV82C-	HV15C/HA05C		Φ3.0/Φ2.0	METAL	4523
--	HV19C/HA09C		Φ6.0/Φ4.5	METAL	SOP
HV13C--	HB03C		Φ1.3/Φ0.9	METAL	2012-3216
- HV14C-	HB04C		Φ1.8/Φ1.1	METAL	MELF
--					3216-5922
HV15C--					MELF
- HV19C-					
--					
HB03C--					
- HB04C-					
--					



## GXH-1, GXH-3 (High speed)

PART No.		NAME	SPECIFICATION	MATERIAL	REMARK
630	137	HA11	0.5×0.3	CERAMIC	0402
5472	630	HV31/HV32	0.7×0.4	CERAMIC	0603
152	8267	HG31/HG32	0.7×0.4	CERAMIC	0603
630	158	HA10	0.7×0.4	CERAMIC	0603
6571	630	HV51/HV52	1.1×0.6	CERAMIC	1005
128	4842	HG51/HG52	1.1×0.6	CERAMIC	1005
630	152	HV01	Φ0.6/Φ0.4	CERAMIC	1005
8472	630	PV01	1.1×0.6	CERAMIC	1005
159	9632	HV81/HV82	1.7×0.9	CERAMIC	1608
630	129	HG81/HG82	1.7×0.9	CERAMIC	1608
2878	630	HV02	Φ0.9/Φ0.7	CERAMIC	1608
132	2322	PV02	1.7×0.9	CERAMIC	1608
630	158	HV03	Φ1.3/Φ0.9	CERAMIC	2012-2125
9084	630	HV04	Φ1.8/Φ1.1	CERAMIC	3216
161	3501	HV05	Φ3.0/Φ2.0	METAL	4523
630	129	HV09	Φ6.0/Φ4.5	METAL	SOP
<del>2885</del>	<del>630</del>	HB03	Φ1.3/Φ0.9	METAL	2012 MELF
<del>3216</del>	<del>9850</del>	HA04	Φ1.8/Φ1.1	METAL	3216
<del>3216</del>	<del>2322</del>	HB04	Φ1.8/Φ1.1	METAL	3216 MELF

~~2882~~ ~~630~~

~~3216~~ ~~9922~~



## MULTI SPEED

NAME				
RA0	VC29	VF02	VG46	VG93
4	VC31	VF05	VG51	VG99
RA0	VE01	VF06	VG52	VS03
5	VE03	VF07	VC75	VS04
RA0	VE05	VG02	VG60	VS05
6	VE07	VG03	VG64	VS08
RV01	VE11	VG04	VG65	VS09
VA06	VE18	VG25	VG67	VT11
VA07	VE23	VG29	VG69	VT14
VC02	VE35	VG33	VG70	VT16
VC04	VE41	VG34	VG71	FA04
VC05	VE45	VG35	VG76	FA05
VC07	VE52	VC74	VC76	FA06
VC12	VE82	VG42	VG91	FF01
VC13	VF01	VG45	VG92	FF02
VC14				
VC15				
VC16				



**EXCEN**

NAME	SPECIFICATION	MATERIAL	REMARK
VN030	0.5×0.3	CERAMIC	0603
VN040	1.0×0.5	CERAMIC	1005
VN065	1.6×1.0	CERAMIC	1608
VN080	2.0×1.2	CERAMIC	2012
VN140	Φ2.2/Φ1.4	CERAMIC	3216
VN220	Φ3.6/Φ2.2	METAL	3225-4532

**DECAN, SM series, CP45-NEO**

PART No.	NAME	SPECIFICATION	MATERIAL	REMARK
J9055153B	TN02S	0.7×0.4	CERAMIC	060
J9055154B	TN03S	1.1×0.6	CERAMIC	3
J90551006	CN020	Φ0.5/Φ0.15 (∞)	CERAMIC	100
A	CN030	Φ0.5/Φ0.25	CERAMIC	5
J9055133B	CN040	Φ0.75/Φ0.4	CERAMIC	040
J9055134C	CN065	Φ1.2/Φ0.65	CERAMIC	2
J9055136C	CN080	Φ1.5/Φ0.9		060
	CN110S	Φ2/Φ1.2	CERAMIC	2012
	CN140	Φ2.2/Φ1.4	CERAMIC	100, 2125, 3216
J9055138	CN220	Φ3.6/Φ2.2	METAL	3216
B	CN400	Φ6.0/Φ4.0	METAL	SOP,QFP
J9055139	CN400	Φ6.0/Φ4.0	METAL	SOP,QFP
B	N	Φ9.0/Φ7.5	METAL	SOP,QFP
J9055258	CN750	Φ12.7/Φ11.0	METAL	SOP,QFP
A	CN1100			

J9055218

A

J9055142

B

J9055143

B



**CP45F-V  
CP40L-V  
DP20  
DISPENSER  
DP50  
DISPENSER**



### NXT M-III 24HEAD

PART No.NAME	SPECIFICATION		MATERIAL	REMARK
2AGKNX00520	Φ0.	Φ0.	CERAMIC	
3	3	3	CERAMIC	
2AGKNX00530	Φ0.	Φ0.	CERAMIC	
3	4	4	CERAMIC	
2AGKNX00550	Φ0.	Φ0.	CERAMIC	
2AGKNX00350	5	5	CERAMIC	
2AGKNX00310	Φ0.	Φ0.	CERAMIC	
2AGKNX00170	7	7	CERAMIC	
3	Φ0.	Φ0.	CERAMIC	
2AGKNX00370	8	8		
3	Φ1.	Φ1.		
2AGKNX00390	0	0		
3	Φ1.	Φ1.		
	3	3		
	Φ1.	Φ1.		
	8	8		
	Φ2.	Φ2.		
	5	5		



### NXT-H08, H12

PART No.NAME	SPECIFICATION		MATERIAL	REMARK
AA1AT0	Φ0.3	Φ0.4/Φ0.25	CERAMIC	
0	Φ0.4	0.4×0.3	CERAMIC	
AA0560	Φ0.5	Φ0.55/Φ0.35×0.25	CERAMIC	
0	Φ0.5	0.55×0.45	CERAMIC	
AA05700	C	Φ0.7/Φ0.38	CERAMIC	
AA05800	Φ0.7	Φ1.0/Φ0.7	CERAMIC	
AA20A00	Φ1.0	Φ1.3/Φ1.0	CERAMIC	
AA20B00	Φ1.3	Φ1.8	CERAMIC	
AA20C01	Φ1.8	Φ2.5	CERAMIC	
AA0WT0	Φ2.5	Φ2.5	RUBBER	
0	Φ2.5	Φ3.7	CERAMIC	
AA20D00	G	Φ3.7	RUBBER	
AA18C00	Φ3.7	Φ5.0	METAL	
AA20E00	Φ3.7	Φ5.0	RUBBER	
AA06300	G			
	Φ5.0			
	Φ5.0			
	G			

### NXT-H01, H02

PART No.NAME	SPECIFICATION		MATERIAL	REMARK
AA0A500	Φ1.0	Φ1.0/Φ0.7	CERAMIC	
AA06800	Φ1.3	Φ1.3/Φ1.0	CERAMIC	
AA0HL00	Φ1.8	Φ1.8	CERAMIC	
AA0HM0	Φ2.5	Φ2.5	CERAMIC	
0	Φ2.5G	Φ2.5	RUBBER	
AA08410	Φ3.7	Φ3.7	METAL	
AA0HN0	Φ3.7G	Φ3.7	RUBBER	
0	Φ5.0	Φ5.0	METAL	
AA08500	Φ5.0G	Φ5.0	RUBBER	
AA0HR01	Φ7.0	Φ7.0	METAL	
AA07200	Φ7.0G	Φ7.0	RUBBER	
AA08000	Φ10.0	Φ10.0	METAL	
AA07310	Φ10.0G	Φ10.0	RUBBER	
AA08100	Φ15.0	Φ15.0	METAL	
AA07410	Φ15.0G	Φ15.0	RUBBER	
AA08200	Φ20.0	Φ20.0	METAL	
AA07510	Φ20.0G	Φ20.0	RUBBER	
AA08300				
AA07610				



**FUJI**

### NXT-H04



PART NO.	NAME	SPECIFICATION	MATERIAL	REMARK
AA06W0	Φ1.0	Φ1.0/Φ0.7	CERAMIC	
0	Φ1.3	Φ1.3/Φ1.0	CERAMIC	
AA06X00	Φ1.8	Φ1.8	CERAMIC	
AA06Y00	Φ2.5	Φ2.5	CERAMIC	
AA06Z00	Φ2.5G	Φ2.5	RUBBER	
AA07F00	Φ3.7	Φ3.7	METAL	
AA07A00	Φ3.7G	Φ3.7	RUBBER	
AA00G00	Φ5.0	Φ5.0	METAL	
AA07B00	Φ5.0G	Φ5.0	RUBBER	
AA00H00	Φ7.0	Φ7.0	METAL	
AA07C00	Φ7.0G	Φ7.0	RUBBER	
AA07K00	Φ10.0	Φ10.0	METAL	
AA07D00	Φ10.0G	Φ10.0	RUBBER	
AA07L00				

### NXT-H04S

PART NO.	NAME	SPECIFICATION	MATERIAL	REMARK
	Φ1.0	Φ1.0/Φ0.7	CERAMIC	
AA8TE00	Φ1.3	Φ1.3/Φ1.0	CERAMIC	
AA8WW0	Φ1.8	Φ1.8	CERAMIC	
0	Φ2.5	Φ2.5	CERAMIC	
AA8WX00	Φ2.5G	Φ2.5	RUBBER	
AA8XA00	Φ3.7	Φ3.7	METAL	
AA93W00	Φ3.7G	Φ3.7	RUBBER	
AA8XB00	Φ5.0	Φ5.0	METAL	
AA93X00	Φ5.0G	Φ5.0	RUBBER	
AA8XC00	Φ7.0	Φ7.0	METAL	
AA93Y00	Φ7.0G	Φ7.0	RUBBER	
AA8XD00	Φ10.0	Φ10.0	METAL	
	Φ10.0G	Φ10.0	RUBBER	



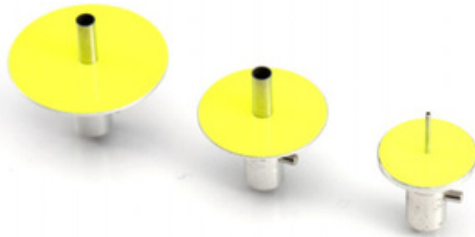
### NXT AIM-H08M



PART NO.	NAME	SPECIFICATION	MATERIAL	REMARK
AA8DX00	Φ0.7	Φ0.7/Φ0.4	CERAMIC	
AA8LT00	Φ1.0	Φ1.0/Φ0.7	CERAMIC	
AA8DY00	Φ1.3	Φ1.3/Φ1.0	CERAMIC	
AA8LW00	Φ1.8	Φ1.8	CERAMIC	
AA8LX00	Φ2.5	Φ2.5	CERAMIC	
AA8ME00	Φ2.5G	Φ2.5	RUBBER	
AA8LY00	Φ3.7	Φ3.7	METAL	
AA8MF00	Φ3.7G	Φ3.7	RUBBER	
AA8LZ00	Φ5.0	Φ5.0	METAL	
AA8MG0	Φ5.0G	Φ5.0	RUBBER	
0	Φ7.0	Φ7.0	METAL	
AA8MA00	Φ7.0G	Φ7.0	RUBBER	
AA8MH0	Φ10.0	Φ10.0	METAL	
0	Φ10.0G	Φ10.0	RUBBER	
AA8MB0				
0				
AA8MK00				

## CP7, CP8

PART No.	NAME	SPECIFICATION	MATERIAL	REMARK
ADCPH-	Φ0.4	Φ0.4 (8mm DISK)	METAL	
9510	Φ0.7	Φ0.7 (8mm DISK)	METAL	
ADCPH-	Φ1.0	Φ1.0 (8mm DISK)	METAL	
9520	Φ1.3	Φ1.3 (8mm DISK)	METAL	
ADCPH-	Φ1.8	Φ1.8 (16mm DISK)	METAL	
9530	Φ2.5	Φ2.5 (16mm DISK)	METAL	
ADCPH-	Φ3.7	Φ3.75 (16mm DISK)	METAL	
9540	5			
ADCPH-				
9550				
ADCPH-				
9560				
ADCPH-				
9570				



## CP6

PART No.	NAME	SPECIFICATION	MATERIAL	REMARK
AWPH-	Φ0.4	Φ0.4 (12mm DISK)	METAL	
9720	Φ0.7	Φ0.7 (12mm DISK)	METAL	
AWPH-	Φ1.0	Φ1.0 (12mm DISK)	METAL	
9514	Φ1.3	Φ1.3 (12mm DISK)	METAL	
AWPH-	Φ1.8	Φ1.8 (12mm DISK)	METAL	
9524	Φ2.5	Φ2.5 (16mm DISK)	METAL	
AWPH-	Φ3.7	Φ3.75 (16mm DISK)	METAL	
9534	5	Φ2.5 (20mm DISK)	METAL	
AWPH-	Φ2.5	Φ3.75 (20mm DISK)	METAL	
9554	Φ3.7	Φ5.0 (20mm SQ DISK)	METAL	
AWPH-	5			
9563	Φ5.0			
AWPH-				
9572				
AWPH-				
9583				
AWPH-				
9602				
AWPH-				
9612				

## CP4

PART No.	NAME	SPECIFICATION	MATERIAL	REMARK
AMPH-	Φ0.7	Φ0.7 (12mm DISK)	METAL	
8710	Φ1.0	Φ1.0 (12mm DISK)	METAL	
AMPH-	Φ1.3	Φ1.3 (12mm DISK)	METAL	
8720	Φ1.8	Φ1.8 (12mm DISK)	METAL	
AMPH-	Φ2.5	Φ2.5 (12mm DISK)	METAL	
8730	Φ1.3	Φ1.3 (25mm DISK)	METAL	
AMPH-	Φ2.5	Φ2.5 (25mm DISK)	METAL	
8740	Φ3.7	Φ3.75 (25mm DISK)	METAL	
AMPH-	5	DISK) Φ5.0 (25mm DISK)	METAL	
8790	Φ5.0	DISK)		
AMPH-				
8780				



**FUJI**

**XP142, XP143(HEXAGON REFLECTOR)**

PART No.	NAME	SPECIFICATION	MATERIAL	REMARK
ADNPN-	Φ0.	Φ0.4/	CERAMIC	
8306	4	Φ0.25	CERAMIC	
ADNPN-	Φ0.	Φ0.7/	CERAMIC	
8310	7	Φ0.38	CERAMIC	
ADNPN-	Φ1.	Φ1.0/	CERAMIC	
8230	0	Φ0.65	CERAMIC	
ADNPN-	Φ1.	Φ1.3/Φ0.9	CERAMIC	
8240	3	Φ1.8/Φ1.2		
ADNPN-	Φ1.	Φ2.5/Φ2.0		
8250	8	Φ3.75/		
ADNPN-	Φ2.	Φ3.2		
8260	5			
ADNPN-	Φ3.			
8276	7			

**XP242, XP243, XP341**

PART No.	NAME	SPECIFICATION	MATERIAL	REMARK
ADEPN-	Φ1.3	Φ1.3/Φ0.9	CERAMIC	
8550	Φ1.8	Φ1.8/Φ1.2	CERAMIC	
ADEPN-	Φ2.5	Φ2.5/Φ2.0	CERAMIC	
8560 DEPN-	Φ3.7	Φ3.75/Φ3.2	CERAMIC	
3060 DEPN-	Φ5.0	Φ5.0	METAL	
3070 DEPN-	Φ7.0	Φ7.0	METAL	
3080 DEPN-	Φ10.	Φ10.0	PLASTIC	
3090 DEPN-	Φ			
3100				



**XP 141**  
**QP242 INDEX NOZZLE**  
**QP242 SINGLE NOZZLE**  
**IP-3 series**  
**GL-II / GL-V**



## KE 2010~2040

PART NAME		SPECIFICATION	MATERIAL	REMARK
E3608-729-	50	1.0×0.5/2-HOLE	METAL	100
0A0 E3600-	0	Φ0.7/Φ0.2	METAL	5
729-0A0	50	Φ0.7/Φ0.4	METAL	060
E3601-729-	1	Φ1.0/Φ0.6	METAL	3
0A0 E3602-	50	Φ1.5/Φ0.9	METAL	100
729-0A0	2	Φ3.5/Φ1.7	PAD	5
E3603-729-	50	Φ5.0/Φ3.2	PAD	160
0A0	3	Φ8.5/Φ5.0	PAD	8
E3604-729-	50	Φ9.5/Φ8.0	PAD	212
0A0 E3605-	4	Φ1.5	METAL	5 MELF
729-0A0	50	Φ2.0	METAL	MELF
E3606-729-	5			
0A0 E3607-	50			
729-0A0	6			
JK2024510	50			
JK2024511	7			
	50			
	8			
	51			
	0			
	51			
	1			



## KE 2050~2080, FX-1R/3R

PART NAME		SPECIFICATION	MATERIAL	REMARK
E3608-729-	50	1.0×0.5/2-HOLE	METAL	100
0A0 E3600-	0	Φ0.7/Φ0.2	METAL	5
729-0A0	50	Φ0.7/Φ0.35	METAL	060
E3601-729-	1	Φ1.0/Φ0.6	METAL	3
0A0 E3602-	50	Φ1.5/Φ1.0	METAL	100
729-0A0	2	Φ3.5/Φ1.7	PAD	5
E3603-729-	50	Φ5.0/Φ3.2	PAD	160
0A0 E3604-	3	Φ8.5/Φ5.0	PAD	8
729-0A0	50	Φ9.5/Φ8.0	PAD	212
E3605-729-	4			5
0A0 E3606-	50			
729-0A0	5			
E3607-729-	50			
0A0	6			
	50			
	7			
	50			
	8			

## KE730~760 KD770 DISPENSER KD775 DISPENSER



JUKI  
SONY



### F-130

PART NO.	NAME	SPECIFICATION	MATERIAL	REMARK
A-1081-496-	AF06021(F1	Φ0.6/	CERAMIC	060
B A-1081-	)	Φ0.25	CERAMIC	3
494-C A-	AF06042(F1	Φ0.7/Φ0.4	CERAMIC	060
1081-495-B	)	Φ1.0/Φ0.7	CERAMIC	3
A-1081-951-	AF10071(F1	Φ1.4/Φ0.9		100
C A-1081-	)	Φ2.5/Φ2.0		5
950-B A-	AF12082(F1	Φ4.0/Φ3.0		160
1081-952-B	)	Φ6.0/Φ4.0		8
A-1081-953-	AF25200(F1			212
B	)			5
	AF40300(F1			
	)			
	AF60400(F1			
	)			

### E-1000

PART NO.	NAME	SPECIFICATION	MATERIAL	REMARK
A-8417-	AF0502	Φ0.45/Φ0.25	CERAMIC	0402
333 A-	1	Φ0.6/Φ0.38	CERAMIC	0603
8417-334	AF0604	Φ0.8/Φ0.5	CERAMIC	1005
A-8417-	0	Φ0.9/Φ0.65	CERAMIC	1005,1608
336 A-	AF0805	Φ1.3/Φ0.9	CERAMIC	1608
8417-337	0	Φ2.5/Φ2.0		2125
A-8417-	AF1007	Φ4.0/Φ3.0		
339 A-	0	Φ6.0/Φ4.0		
8417-340	AF1208			
A-8417-	0			
341 A-	AF2520			
8417-342	0			
	AF4030			
	0			
	AF6040			
	0			



**G200MK  
E-2000, SI-  
F209 SS-H, SS-  
H2F**

### 900 series (ORG.)(12HEAD)

PART No.	NAME	PART No.	NAME	PART No.	NAME
0032260	90	0032597	92	0032259	93
3	1	2	0	1	7
0034818	90	0032597	92	0032259	93
6	2	0	1	2	8
0032260	90	0032499	92	0032259	93
2	4	6	3	3	9
0034503	91	0032186	92	0033053	95
1	1	6	4	3	1
0034502	91	0033365	92	0033053	95
0	3	2	5	4	2
0032186	91	0034652	93	0033053	95
1	4	2	2	5	3
0032186	91	0034652	93	0033053	95
2	5	3	3	6	4
0032186	91	0032781	93	0033053	95
3	7	0	4	7	5
0032186	91	0034652	93	0033053	95
4	8	4	5	8	6
0032186	91	0035235	93		
7	9	3	6		



### 1000 series (ORG.)(20HEAD)

PART No.	NAME	PART No.	NAME
03013307-	100	03013425-	103
01	1	01	3
03015869-	100	03013103-	103
01	3	01	4
<b>03015840-</b>	100	03015194-	103
<b>01</b>	4	01	5
03013300-	100	03014331-	103
01	5	01	6
03013303-	100	03014336-	113
01	6	01	3
03014327-	101	03015384-	113
01	1	01	5
	101	03015222-	123
	4	01	5
	103		
	2		

**400 series  
500 series  
700 series  
2000 series  
3000 series**



# CASIO

## YCM-7000, 7700, 7800, 8800

PART No.	NAME	SPECIFICATION	MATERIAL	REMARK
H03/H3M	H03/H3M	0.4×0.5/Φ0.25	CERAMIC	060
HS1/H1M	HS1/H1M	Φ0.7/Φ0.38	CERAMIC	3
H2/H2M	H2/H2M	Φ1.1/Φ0.65	CERAMIC	100
H06	H06	Φ1.2/Φ0.9	CERAMIC	5
H7	H7	Φ2.0/Φ1.4	CERAMIC	3006
H07	H07	Φ3.0/Φ2.3		8
H21 MELF	H21 MELF	Φ0.8/Φ0.45	CERAMIC	MELF
H22 MELF	H22 MELF	Φ1.2/Φ0.9	CERAMIC	MELF
H23 MELF	H23 MELF	Φ2.0/Φ1.4	CERAMIC	MELF
H24 MELF	H24 MELF	Φ3.0/Φ2.3		MELF
H31	H31	Φ5.0/Φ3.0		
H32	H32	Φ6.0/Φ4.0		
H33	H33	Φ9.0/Φ7.0		
H34	H34	Φ11.0/Φ9.0		
H35	H35	Φ13.0/Φ11.0		
H36	H36	Φ18.0/Φ16.0		
T7	T7	Φ2.0/Φ1.4	CERAMIC	
T07	T07	Φ3.0/Φ2.3		
T06	T06	Φ1.6/Φ1.0	CERAMIC	
T21 MELF	T21 MELF	Φ0.8/Φ0.45	CERAMIC	
T22 MELF	T22 MELF	Φ1.2/Φ0.9	CERAMIC	
T23 MELF	T23 MELF	Φ2.1/Φ1.4	CERAMIC	
T24 MELF	T24 MELF	Φ3.1/Φ2.6		
T31	T31	Φ5.0/Φ3.0		
T32	T32	Φ6.0/Φ4.0		
T33	T33	Φ9.0/Φ7.0		
T34	T34	Φ11.0/Φ9.0		
T35	T35	Φ13.0/Φ11.0		
T36	T36	Φ18.0/Φ16.0		



## YCM-3300, 3500

PART No.	NAME	SPECIFICATION	MATERIAL	REMARK
NP	NP1	Φ1.2/		
1	NP2	Φ0.4		
NP	P2	Φ1.2/	CERAMIC	
2	P7	Φ0.6		
P2	04	Φ1.2/	CERAMIC	
P7	05	Φ0.4	CERAMIC	
04	06	Φ3.0/	CERAMIC	
05	07	Φ1.0		
06	031	Φ0.8/		
07	032	Φ0.5		
031	Φ11/Φ9	Φ1.2/		
032	Φ13/Φ11	Φ0.9		
T34	Φ18/Φ16	Φ1.6/		
T35		Φ1.2		
T36		Φ3.0/		
		Φ2.3		
		Φ5.0/		
		Φ2.5		



## GENERAL TYPE (MX100~400, MPS-1010~1030)

PART No.	NAME	SPECIFICATION	MATERIAL	REMARK
21003-67190	0603	Φ0.5/Φ0.25	CERAMIC	0603
21003-61000-005B	A(BSE)	Φ0.7/Φ0.4	CERAMIC	1005
21003-61000-005	A(ORG)	Φ1.0/Φ0.5	CERAMIC	1005
21003-62000-105	B	Φ1.2/Φ0.7	CERAMIC	1608~3216
21003-63000-005	C	Φ2.0/Φ1.2	CERAMIC	2012~2125
21003-64000-005	D	Φ3.0/Φ2.0		3216
21003-65000-005	E	Φ6.0/Φ4.5		IC,QFP
21003-66000-105	P2-1	Φ8.8/Φ6.5		QFP,PLCC
21003-66190-000	P2-1-S01	Φ8.0	RUBBER	
21003-66290-000	P2-1-S02	Φ6.0	RUBBER	
21003-66390-000	P2-1-S03	Φ17.0	RUBBER	
21003-67200-000	H-4C-2	0.7×0.4		1005



## PRECISION(QP)(MX240, MPS-1020AP)



PART No.	NAME	SPECIFICATION	MATERIAL	REMARK
21243-61090-	A	Φ1.0/Φ0.5	CERAMIC	1005
003 21243-	B	Φ1.2/Φ0.7	CERAMIC	1608
62090-100	C	Φ2.0/Φ1.2	CERAMIC	2012,2125
21243-63090-	D	Φ3.0/Φ2.0		3216
000 21243-	E	Φ6.0/Φ4.5		IC,QFP
64090-000	E-S09	18×2	PAD	
21243-65090-	E-S09-1	18×4	PAD	
000 21243-	E-S0G	17×2	PAD	
65990-001	P2-1	Φ10.0/Φ8.5		QFP,PLCC
21243-65990-	P2-1-S01	Φ8.0	RUBBER	
100 21243-	P2-1-S02	Φ6.0	RUBBER	
65g90-000	P2-1-S04	Φ17.0	RUBBER	

21243-66090-  
000 21243-  
66190-000  
21243-66290-  
000 21243-  
66490-000

**SANYO**



**TCM-3000, 3000Z, 110J**

PART No.	NAME	SPECIFICATION	MATERIAL	REMARK
		060	Φ0.6/	CERAMIC 0603
		3	Φ0.3	CERAMIC 1005
630	052	100	Φ1.2/	1005
9586	630	5	Φ0.7	1608
052	9517	Z81	Φ0.6/	2125
630	052	Z11	Φ0.4	3216
9579	630	Z71	Φ0.9/	IC/S
052	9524	Z21	Φ0.7	IC/L
630	052	Z41	Φ1.3/	S MELF
9548	630	Z31	Φ0.9	L MELF
052	9531	Z52	Φ1.8/	
630	052	Z62	Φ1.1	
9555	630		Φ3.0/	
052	9562		Φ2.0	
			Φ6.0/	
			Φ5.0	
			Φ1.3/	
			Φ0.9	
			Φ2.5/	
			Φ1.2	

**TDM-3000 DISPENSER**

PART No.	NAME	SPECIFICATION	MATERIAL	REMARK
630	071	NS102	Φ0.7/Φ0.4 P=0.9	
6085	630	NM20	Φ0.8/Φ0.5 P=1.3	
068	1338	0	Φ0.8/Φ0.5 P=1.0	
630	093	NM20	Φ0.9/Φ0.6 P=1.4	
9187	630	3	Φ1.3/Φ0.96	
074	7782	NM20	P=1.8 Φ1.3/	
630	068	4	Φ0.96 P=2.0	
1376	630	NL300	Φ1.3/Φ0.96	
070	9421	NL302	P=1.5 Φ0.8/Φ0.5	
630	067	NP401	P=1.0	
5757	630	NP404		
069	0347			



**TCM-1000 series  
TCM-822 series  
TIM-5000 series  
TDM-60 DISPENSER  
TDM-1000 DISPENSER**

## ASSEMBLEON AX301, AX501

PART No.	NAME	SPECIFICATION	MATERIAL	REMARK
9466	027	CP L1	METAL	0402
71011	9466	CP L2	METAL	0603-1005
027	71081	CP L3	METAL	1005-1608
9466	027	CP L4	METAL	1608-3216
71131	9466	L5		1206-S0
027	71171	L6	MELF	
9466	027	L7		
71201	9466	L8		
027	71251	V3		
9466	027	V4		
71301	9466	V5		
027	71351	V6		
9466	027	V7		
71551	9466	V8		

027 71601  
 9466 027  
 71651 9466  
 027 71701  
 9466 027  
 71751 9466  
 027 71801



## TOPAZ-XII, OPAL-XII(YV100X, YV180X)

PART No.	NAME	SPECIFICATION	MATERIAL	REMARK
	060	0.35×0.65	CERAMIC	0603
KV8-M7710-	3	0.7×0.8 (X)	CERAMIC	1005
A0X KV8-	71A	1.0×1.7 (X)	CERAMIC	1608
M7720-A0X	72A	Φ4.0/3.0×2.0	METAL O-	IC
KV8-M7730-	73A	Φ8.0	ring	SOP, QFP
A1X KV8-	74A	3.0×2.0	METAL	MELF
M7740-A1X	76A	Φ1.2/Φ0.7	CERAMIC	1608
KV8-M7760-	79A	0.6×0.8	CERAMIC	1005
A1X KV8-	71F	1.0×1.7	CERAMIC	1608
M77WL-A00	72F	Φ4.0/3.0×2.0	METAL	IC
KV8-M71U1-	73F	Φ1.2/Φ0.7	CERAMIC	1608
002	KV8	70F		

M71N2-A00  
 KV8-M71N3-  
 A00 KV8-M7WL-  
 A00



**MG-3, MC-1, MC-12 (YS12, YS24, YG12, YG24) MG-1, MG-8 (YG100B, YG100R, YG88R)**  
**MG-2 (YG200, YG300)**  
**EMERALD-XII (YV88XG, YV88XF)**  
**TOPAZ, EMERALD (YV100II, YVL88)**



# SCM24 NOZZLE CLEANER



Nozzle cleaner	Name	SCM-12S	SCM-24S
Nozzle head	Quantity	12	24
Compressed air	Type	clean air	clean air
	Pressure	7kgf/cm <sup>2</sup>	7kgf/cm <sup>2</sup>
Cleaning water	Type	distilled water	distilled water
	Cleaning fluid amount	4L	6L
Input power supply	Voltage	DC100~250V	DC100~250V
	Plug	3 PIN(with ground)	3 PIN(with ground)
	Cable length	1.6m	1.6m
	Power consumption	200W	200W
Size		550(L) × 420(W) × 480(H)	
Weight		42.5kg	

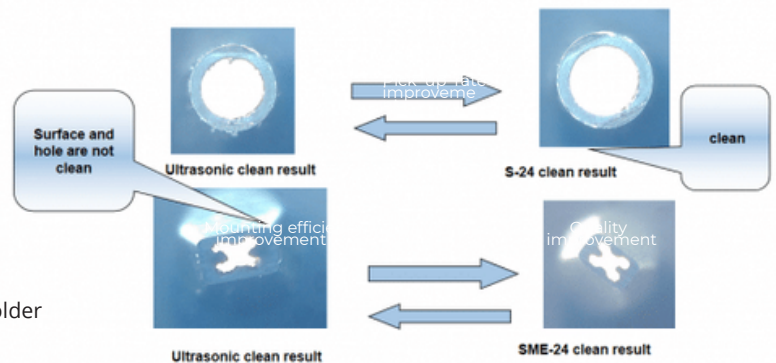
## Cleaning Process



Cleaning result compare with Ultrasonic cleaner

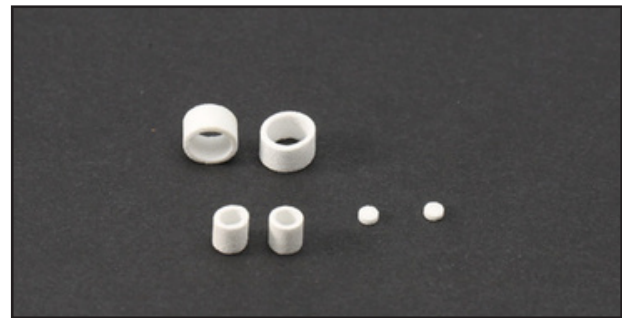
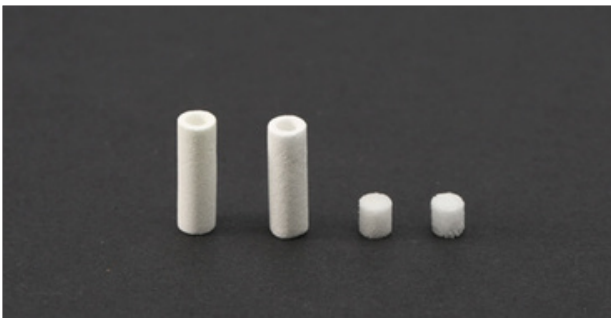
## Features of Nozzle Cleaner

- The effect of Carbon reduction by using distilled water
- Possible to clean 12/24 nozzle at the same time
- Easy to operate with touch panel
- Reduce the time to change the nozzle by using the nozzle holder





# SMT FILTER



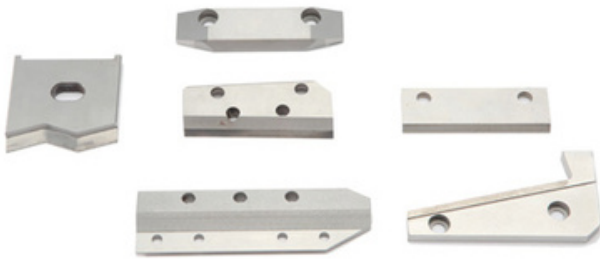
MAKER	MACHINE	PARTS NO.	REMARKS	
PANASONIC	CM602/402	N610071334AA	HOLDER FILTER	
	NPM-8H/16H	N610009394AC	NOZZLE FILTER	
	CM20F/DT401	N610009394AB	NOZZLE FILTER	
	NPM	N510054846AA	ELEMENT FILTER	
	MSR	1046710117	NOZZLE FILTER	
	MV-SERIES	N421PTFBF		SOFT FILTER
		N421PTFB30		HARD FILTER
		1042710035		NOZZLE FILTER
		1023710012		NOZZLE FILTER
		MSH2/3		NOZZLE FILTER
		MMC/MCF		NOZZLE FILTER
		MSF, BM	1080729975	NOZZLE FILTER
FUJI	CP6	WPH-2030		
	CP7	DCPH-0630		
	NXT 4HEAD	XH00400		
	NXT 8HEAD	XH00800		
	NXT	XH00560		
	NXT	XH00940		
SAMSUNG	SM471/481			
	SM320	J7458002A		
	CP45FV	H3022L		
	CP40LV	H3022T		
JUKI	KE2000-SERIES	E3052729000		
	KE2050-2080			
YAMAHA	YV100X			
	YS12/24	K46-M8527-C00		
HITACHI	GXH1/3, Σ-G4/G5			

## SMT HEAD SHAFT & HOLDER



MAKER	MACHINE	REMARKS
PANASONIC	CM402-8H	HOLDER/SHAFT
	CM602-12H	HOLDER/SHAFT
	NPM-8H	HOLDER/SHAFT
	NPM-16H	HOLDER/SHAFT
YAMAHA	YV100X	HEAD SHAFT
	YV100II	HEAD SHAFT
	YS12/24	HEAD SHAFT
SAMSUNG	CP40LV	BELL NOZZLE
	CP45FV	BELL NOZZLE
	SM-Series	BELL NOZZLE
	KE2050-2080	HEAD SHAFT
JUKI		

## CUTTER



MAKER	MACHINE	REMARKS
PANASONIC	MSR	MOVING / FIXED
	MV-SERIES	MOVING / FIXED
	MSH2/3	MOVING / FIXED
KME	CM88S-M	MOVING / FIXED
	CM88C-M	MOVING / FIXED
FUJI	CP743	MOVING / FIXED
	CP732	MOVING / FIXED
	CP6	MOVING / FIXED
SANYO	TCM3000	MOVING / FIXED

## BACK UP RUBBER BLOCK & MULTI MANUAL BACK UP BLOCK



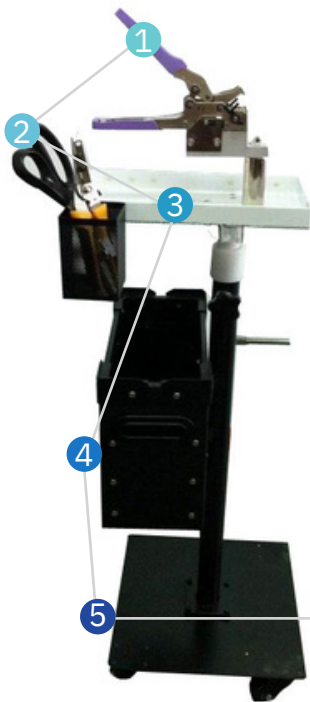
### BACK UP RUBBER BLOCK

NAME	PART DESCRIPTION	REMARKS
BACK UP RUBBER	44*125	HARD/SOFT
BACK UP RUBBER BLOCK	DATA for ON(SMT machine)	

### MULTI-MANUAL BACK UP BLOCK

NAME	PART DESCRIPTION	REMARKS
MBU250	250mm(L)*42mm(W)*Min.52mm(H)	
MBU300	H)	Stroke type
MBU350	300mm(L)*42mm(W)*Min.52mm(H)	
	350mm(L)*42mm(W)*Min.52mm(H)	

# SMT SPLICE TOOL SET



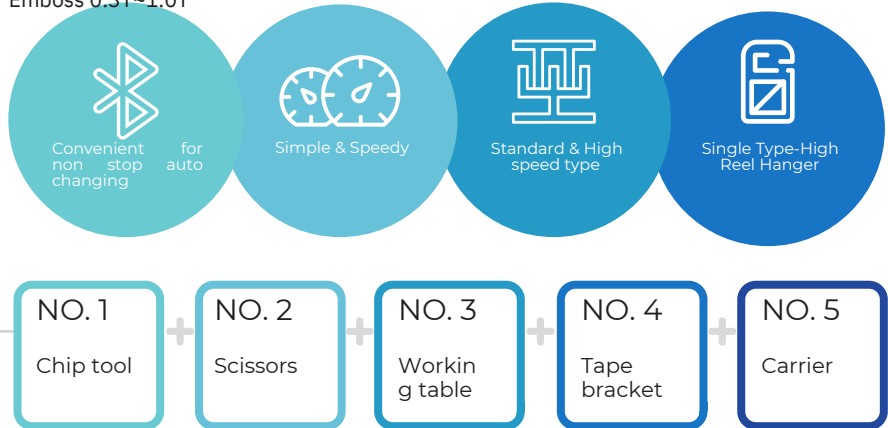
## Purpose

Ideal for splicing SMT component tape on the fly to dramatically reduce downtime on pick and place equipment.

Especially cassette Tape Reel and new tape can be connected through splice lip by non stop. " Single Type : Paper or Emboss Single(Carrier Tape) with : 8mm~24mm"

## Features

A) Width : Paper or Emboss "8mm~24mm" B) Thickness : Paper or Emboss 0.3T~1.0T



## JOINT TAPE



NAME	PART DESCRIPTION	REMARKS
JOINT TAPE	8mm YELLOW	BOX(500EA
JOINT TAPE	12mm YELLOW	)
JOINT TAPE	16mm YELLOW	BOX(500EA
JOINT TAPE	24mm YELLOW	)
JOINT TAPE	8mm BLUE	BOX(500EA
JOINT TAPE	12mm BLUE	)
JOINT TAPE	16mm BLUE	BOX(500EA
		)
		BOX(500EA
		)
		BOX(500EA
		)

## SPLICE CLIP

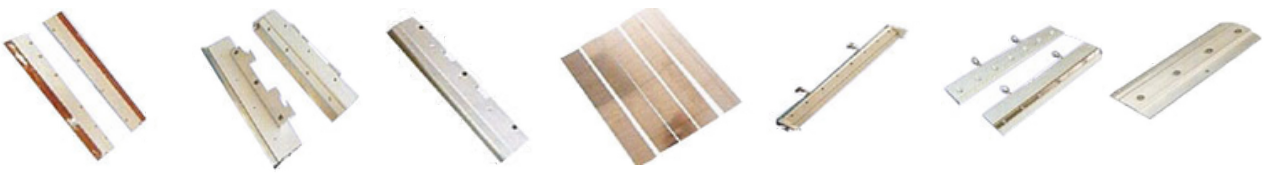


NAME	PART DESCRIPTION	REMARKS
SPLICE CLIP	COPPER multi	BOX(4,000EA
SPLICE CLIP	COPPER piece	)
		BOX(4,000EA
		)

## SMT SQUEEGEE HOLDER & BLADE



NAME		
MPM	SJ	PANASONIC
JUKI	DEK	YAMAHA
SAMSUNG	HITACHI	ESE



## DEK BOARD CLAMP & BOM SQUEEGEE USC



### DEK BOARD CLAMP

NAME	PART DESCRIPTION
DEK PRINTER	BOARD CLAMP 250mm
DEK PRINTER	BOARD CLAMP 340mm
DEK PRINTER	BOARD CLAMP 380mm
DEK PRINTER	BOARD CLAMP 500mm

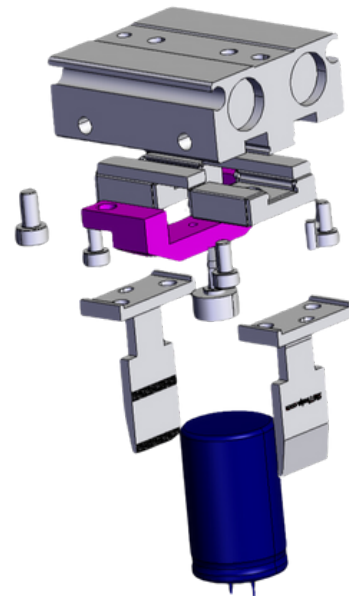
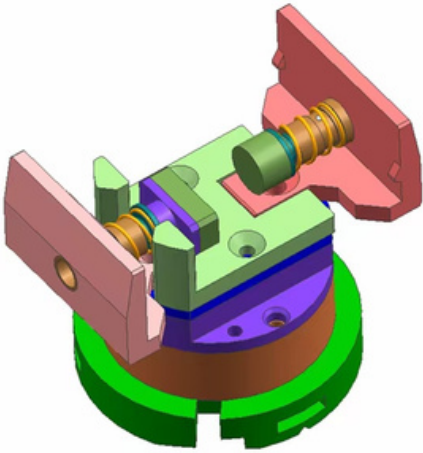


### BOM SQUEEGEE USC

NAME	PART DESCRIPTION
193199 BOM SQUEEGEE USC	300mm
193202 BOM SQUEEGEE USC	400mm
193205 BOM SQUEEGEE USC	520mm

# SMT Customized Nozzle

<https://ph.smthelp.com/album/smt-nozzle-supplier.ObO>



# SMT Customized Feeder

<https://ph.smthelp.com/album/smt-feeder-designer.hBn>

